



# PUBLIC HEALTH ANNUAL REPORT 2018

---

1805 FORD AVE NORTH, SUITE 200  
GLENCOE, MN 55336  
WWW.CO.MCLEOD.MN.US  
TELEPHONE: 320-864-3185  
FAX: 320-864-1484



Follow us on:



# MISSION



To protect, promote and improve the health of all people in McLeod County through education, empowerment and collaboration.

Our agency has provided public health services in McLeod County since the 1920s. We provide community care services, family health services, general community health promotion, environmental health services and multiple clinic opportunities.

## MEEKER-MCLEOD-SIBLEY COMMUNITY HEALTH SERVICES

Forty-eight locally-governed Community Health Boards oversee local health departments that work in tandem with the Minnesota Department of Health (MDH) to fulfill public health responsibilities.

This interlocking statewide system is a critical component of an effective response to public health threats as well as efforts to improve the health of Minnesotans.

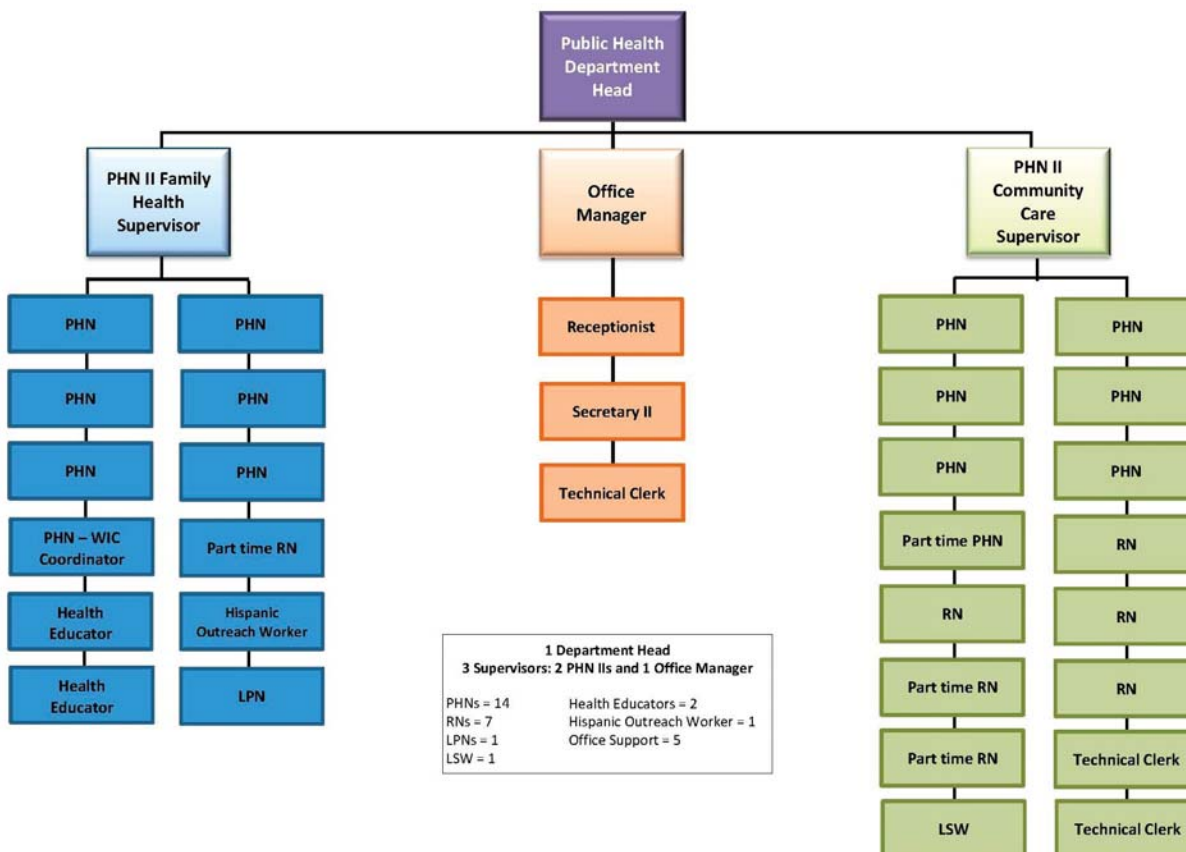


**Public Health**  
Prevent. Promote. Protect.

**Meeker McLeod Sibley**  
Community Health Services

McLeod County Public Health has been a member of the Meeker-McLeod-Sibley Community Health Services (MMS CHS) since it was established by a joint powers agreement in 1980. Within this structure, the three counties work closely together, sharing staff and resources to jointly plan and implement health improvement efforts while maintaining individual public health agencies, budgets and unique programs.

## PUBLIC HEALTH ORGANIZATIONAL CHART



# SIX ESSENTIAL AREAS OF PUBLIC HEALTH RESPONSIBILITY

1

## Assure an adequate public health Infrastructure

- Assess health needs of local communities

2

## Promote healthy communities & healthy behaviors

- Develop policies to foster healthy communities
- Offer home visits to high-risk pregnant women & new families
- Implement youth tobacco & chemical use prevention programs

3

## Prevent the spread of infectious diseases

- Investigate & control communicable diseases
- Coordinate immunization clinics

4

## Protect against environmental health hazards

- Investigate & decrease public health nuisances
- Inspect & coordinate repairs for lead & other Healthy Homes hazards

5

## Prepare for & respond to disasters & assist communities in recovery

- Develop response plans for re-emergence of Measles & new emerging threats like Zika

6

## Assure quality & accessibility of health services

- Perform long-term care consultations
- Operate Women, Infants & Children (WIC) clinics
- Provide health care services at county correctional facilities
- Host dental clinics & provide fluoride varnishing

# Core functions of Public Health

## Assessment

"Knowing what needs to be done"

- Monitor health status to identify community health problems
- Diagnose and investigate problems & health hazards in the community

## Policy Development & Planning

"Being part of the solution"

- Inform, educate & empower people about health issues
- Mobilize community partnerships to identify & solve health problems
- Develop policies & plans that support individual and community health efforts

## Assurance

"Making sure things happen"

- Enforce laws & regulations that protect health & ensure safety
- Link people to needed health care services & assure the provision of health care when otherwise unavailable
- Assure a competent public health & personal health care workforce
- Evaluate effectiveness, accessibility & quality of personal & population-based health services

# Statute 145A-Local Public Health Act

The Local Public Health Act outlines the shared public health responsibilities of the state & local governments in Minnesota & establishes accountability for funding on statewide initiatives, provides guidelines for assessment and planning, requires documented progress toward the achievement of statewide goals & assigns oversight of the statewide system to the commissioner of health.

The Community Health Board (CHB) is the legally recognized governing body for local public health in Minnesota. It is the only governmental entity eligible for funding under the Local Public Health Act grant. CHBs have statutory responsibility under the Local Public Health Act. CHBs work in partnership with the Minnesota Department of Health (MDH) to address the areas of public health responsibility.



# Assuring an adequate Public Health Infrastructure

## Our Teams



### SUPPORT STAFF

Vision:

Apply our knowledge and skills to support our Community Care and Family Health teams in reaching their common goals of promoting optimal health for our community



### FAMILY HEALTH

Vision:

Promote, protect and improve the health and safety of families and children in McLeod County



### COMMUNITY CARE

Vision:

Continue to promote and maintain optimal health and safety of clients and family in their homes by assessing the needs of clients, families and communities and developing a plan of care to meet identified needs





# PROMOTING HEALTHY COMMUNITIES & BEHAVIORS

## MMS Healthy Communities Leadership Team

The Meeker-McLeod-Sibley Healthy Communities Leadership Team (MMS HCLT) is a coalition of community members that has been in existence for over 15 years.

The Mission of the HCLT is to advance healthy living within Meeker, McLeod & Sibley Counties.

The Vision of the HCLT is to partner with communities to encourage & support efforts to impact environmental change & enhance healthful living.



Meeker, McLeod, Sibley

*Healthy Communities*

## 2018 MMS HCLT Highlights

Awarded mini grants to 7 local organizations:

- Howard Lake - Waverly - Winsted/Dassel-Cokato Schools
- Crow River Area Breastfeeding Coalition
- Equal Access for Kids
- Lester Prairie High School Reach Program
- Sibley County Partnering in Prevention
- McLeod Alliance for Victims of Domestic Violence
- Prince of Peace Retirement Living

Began implementation of the Make It Ok campaign

Trained in Adverse Childhood Experiences, Question Persuade Refer & emerging tobacco issues

Completed the 2018 Community Behavior Survey

Released toolkits for community partners on obesity, mental health, senior health & health equity



MEEKER MEMORIAL  
HOSPITAL & CLINICS  
*Care as it should be.*



Hutchinson Health

HealthPartners®



MINNESOTA RIVER  
Area Agency on Aging®



Public Health  
Prevent. Promote. Protect.



Glencoe Regional  
Health Services

Meeker McLeod Sibley  
Community Health Services





# Prepare for and respond to disasters & assist communities in recovery



## Medical Countermeasures

In emergencies such as terroristic attacks or pandemics, large numbers of people may be exposed to disease-causing germs. Medical Countermeasures (MCMs) are medications that may be given to exposed people to prevent them from becoming ill. Local Public Health will work with MDH to dispense the MCMs to the public at points of dispensing (POD) sites.

## Health Alert Network (HAN)

When an event threatens the health of Minnesotans, quick, reliable communication to those responding to the event can prevent illnesses and save lives. HAN messages are received from MDH and forwarded to health care providers, emergency workers and others working to protect the public.

Twelve HAN notifications were issued in McLeod County in 2018.



## Continuous Training

During 2018, Public Health staff participated in local and regional training exercises, including a Highly Infectious Disease Exercise (South Central Region), Family Assistance Center training (MN Homeland Security and Emergency Management), and many other training opportunities to ensure Public Health is prepared should a disaster occur.



# Protect against Environmental Hazards

## Boil Water Notice from Minnesota Department of Health

The City of Stewart experienced a loss of water pressure for the drinking water supply on September 5th, 2018. A boil advisory notice was issued to its residents. The city was completing a construction project on the city water supply mains which resulted in pressure loss. The cause of this may have been due to an open fire hydrant which reduced the ability to fill the elevated water storage due to use of temporary lines during construction. Thankfully, the system restored pressure over time. The water lines were flushed and the chlorine residuals were monitored. Bacteriological samples were taken and analyzed. Test results were made available after 24 hours and this advisory was lifted after a 24 hour time span.



## Healthy Homes Report

Our Purpose: Healthy Homes Minnesota initiative is intended to help MDH further its mission to protect, maintain and improve the health of all Minnesotans through a statewide focus and holistic approach to making indoor environments healthier and safer.

A free healthy homes assessment is available to any households in McLeod, Sibley or Meeker County. During the assessment, the assessor looks at the seven principles of a healthy home and assists the occupant with creating a safe and healthy living environment. Households that participate in an assessment may be eligible to receive supplies and/or resources. This service is able to be provided through a grant with the Minnesota Department of Health. In 2018, 22 Healthy Homes assessments were completed in McLeod County.



## Environmental/Nuisance Year End Report

Eight cases were logged regarding nuisance complaints. Extreme clutter was reported in 5 cases and bedbugs were reported in 3 cases. The Healthy Homes program was often offered to people calling in with concerns and that program was often able to assist in getting the situation resolved.

- One able to resolve on own – was roommate issue- roommate moved out
- One went to Skilled Nursing Facility for ongoing care
- One referred to city for enforcement
- One referred to the Healthy Homes program
- Two referred to the state (2 bedbug cases were motels)
- Two refused assistance/services



## Minnesota Department of Health Reporting

Public Health is not involved with the activities of licensing, inspecting and educating food, beverage, and lodging establishments, manufactured home parks, campgrounds, pools, and/or spas. This is done by regional State Health Department staff and in some cases the cities themselves.

Complaints Investigated by MDH:  
9

Inspections Conducted by MDH:  
138

Establishments Licensed by MDH:  
205

Plans Reviewed by MDH:  
3

# Assuring the quality and accessibility to health services

## Providing child passenger safety to families:

Motor vehicle crashes are the number one cause of deaths for children under the age of 14. Nationally, 4 out of 5 child passenger safety seats are not installed correctly. This calculates to over 85% misuse of car seats. The McLeod County Public Health Department provides an assurance role in having trained technicians and practitioners to provide services to parents, families and caregivers around Child Passenger Safety. Over 132 residents have been educated on proper use and installation of a car seat in 2018.

### *CAR SEAT DISTRIBUTION PROGRAM*

Technicians provide a free one-hour class for parents on proper use of their child safety seat. The training includes information on the correct seat for the child, safely securing the child in the seat, and correct installation of the seat in the vehicle. Child safety seats are available for purchase, on a sliding fee basis at the training or are part of a residents insurance if they have PrimeWest or Ucare healthcare insurance. Over the course of 2018, this program distributed 57 seats.



### *CAR SEAT CHECKS*

At a car seat check, seats are evaluated for defects, recalls, suitability for the age and size of the child, and fit with the safety belt system in the vehicle. McLeod County Public Health provided over 20 free personal car seat checks to parents or caregivers in 2018.

---

## Patient Access to Care:

When I met my client, he was newly 65 and had severe anxiety over the changing of his insurance, his growing healthcare needs related to a chronic condition, and, what he felt was the over-whelming day to day tasks he needed to accomplish to stay independent in his apartment.

He was utilizing the emergency room and urgent care at least weekly to treat a variety of ailments.

After meeting him and providing an in-home assessment, his nurse case manager was able to set an immediate goal of establishing a primary provider for his medical needs. His case manager also worked with him on a weekly basis to ensure he was taking his medications and following up with any appointments. His nurse case manager was also able to set up a homemaker service to come into the apartment to provide cleaning and a service called "home management" that helped the client sort through bills and paperwork, create grocery lists, and schedule appointments. Six months after his first assessment, the client reported that he had not used the emergency department once and was able to address his medical needs with scheduled visits to his doctor. The client also reported a noticeable decrease in his anxiety and an increase in the time he had for his hobbies and other leisure activities.





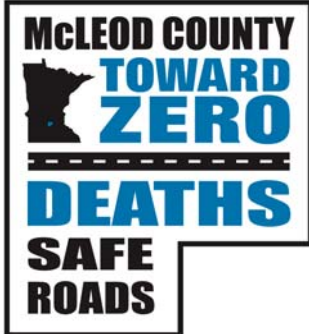
## Accreditation Update for Meeker McLeod Sibley Community Health Services

Meeker-McLeod-Sibley Community Health Services (MMS CHS) achieved national accreditation through the Public Health Accreditation Board (PHAB) on November 17th, 2017. The national accreditation program works to improve and protect the health of the public, by advancing and ultimately transforming the quality and performance of the nation's state, local, Tribal, and territorial public health departments.

MMS CHS is one of fewer than 300 health departments that have thus far achieved accreditation through PHAB since the organization launched in 2011. Another point of achievement for MMS CHS is that they are the first multi-county rural CHS to become accredited in Minnesota.

Over the course of 2018, MMS CHS has worked to submit an annual report to PHAB. PHAB has stated that the health department has elevated the status of performance management work, as well as efforts to consolidate gains for quality improvement, community health assessment (CHA), and community health improvement over the past year. MMS CHS has been an ambassador for PHAB, mentoring others, and sharing lessons learned, which is especially important for rural health departments striving for accreditation.

MMS CHS is also promoting health equity in their work – for example, by oversampling Hispanic populations in the upcoming CHA, it allows the efforts to be more data informed. MMS CHS is defining and refining a management structure that works while assuring accountability and innovation within a three-county health department which is quite an accomplishment.



# Traffic Safety is at the forefront

McLeod County Public Health has been a part of a new coalition for the past two years known as the McLeod County Toward Zero Deaths Safe Roads Coalition. To date, this coalition includes the McLeod County Sheriff's Office, McLeod County Attorney's Office, Allina EMS – Hutchinson/Glencoe, McLeod County Highway Department, Glencoe Police Department, McLeod County Public Health, Hutchinson and GSL Schools, Hantge Funeral Chapels, MN State Patrol, Hutchinson Fire Department, a representative from the McLeod County Police Chief's Association, Glencoe Regional Health Services, and 3M to name a few. The goal of the coalition is to involve and engage each and every community in McLeod County and the organizations within them.

This coalition reviews all fatalities and serious injuries related to traffic crashes at least twice a year. Preliminary crash data states that McLeod County experienced 4 fatal crashes and 9 serious injury crashes. The coalition looks at the four E's when reviewing these crashes -- Enforcement, Education, Engineering and Emergency Medical Services. A discussion is had to see if any of these areas can work on improvements related to the cause of the crash. Besides any engineering enhancement, some of the main findings, otherwise known as the "Big Four", remain a challenge -- Impairment; Distraction; Seat belt use and Speed.

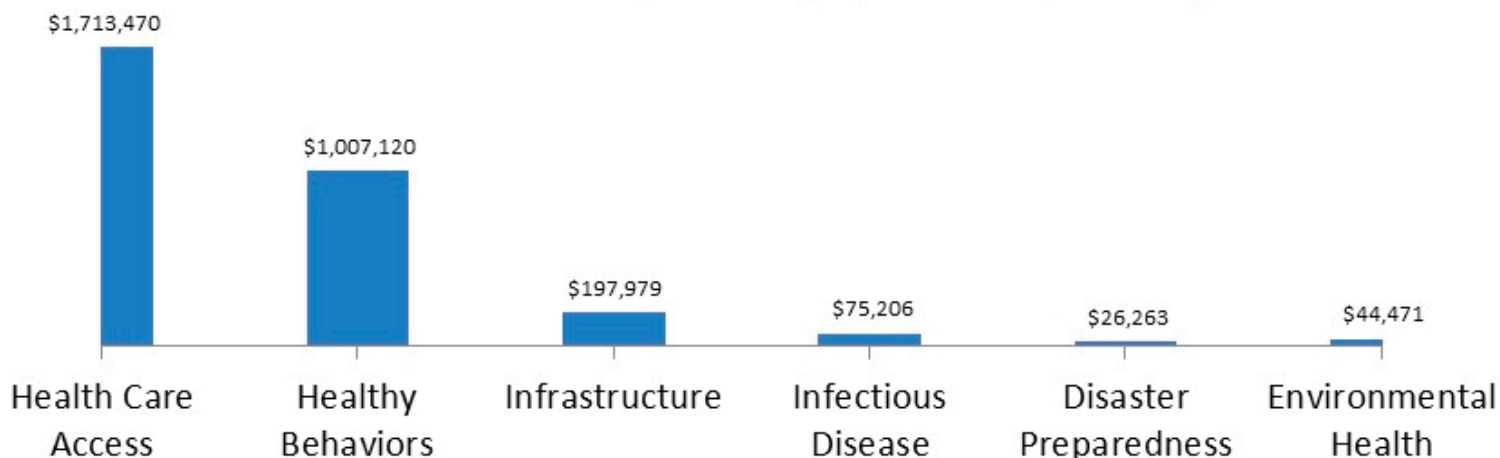
Some of the activities that McLeod County TZD Safe Roads Coalition has participated in focus around education and awareness. Educational activities included presenting to the McLeod County Board; prom messaging around safe driving, a drowsy driving toolkit sent out to employers and distracted driving/speed table tents. Awareness activities included coalition presence at We Care about Our Kids Day, Ridgewater College Welcome Day, McLeod County Fair, and Buckle Up stencils painted at local schools and county government buildings.



Members of the coalition in front of one of their traffic safety initiatives.



## 2018 Public Health Expenditures, by area of responsibility



### McLeod County Public Health Advisory Board:

- Ron Shimanski, 1st District Commissioner
- Joseph Nagel, 5th District Commissioner
- Dr. Catherine McGinnis, MMS CHS Medical Consultant
- Chris Sonju, Community Member
- Susan DeMars, Community Member
- Sandy Haasl, Community Member
- Karen Gensmer, Community Member

### McLeod County Board of Commissioners:

- Ron Shimanski, 1st District
- Doug Krueger, 2nd District
- Paul Wright, 3rd District
- Rich Pohlmeier, 4th District
- Joseph Nagel, 5th District

McLeod County Administrator: Cindy Ford

### McLeod County Public Health Director:

Vacant June 2018